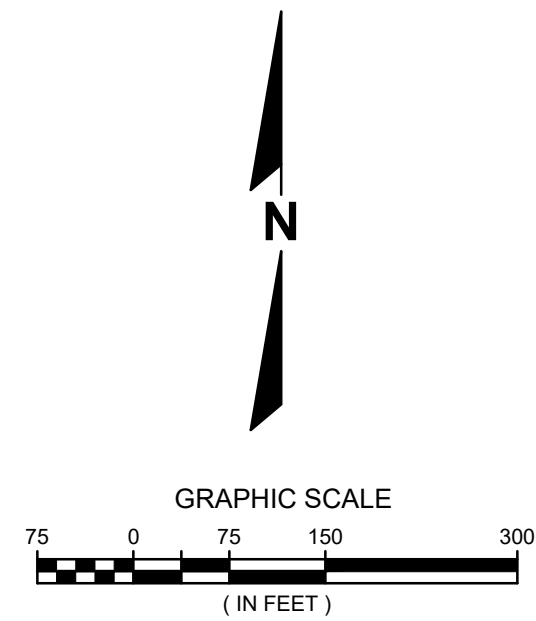


LEGEND

- ▲ BENCHMARK
- SECTION CORNER
- IRON PIPE FOUND
- IRON PIPE SET
- BOLLARD
- + SOIL BORING/MONITORING WELL/CORE LOCATION
- † FLAGPOLE
- ✚ MAILBOX
- SIGN
- BILLBOARD
- CONTROL BOX
- ◇ TRAFFIC SIGNAL
- ✚ RAILROAD CROSSING SIGNAL
- CABLE PEDESTAL
- ⊗ POWER POLE
- ↑ GUY POLE
- ↑ GUY WIRE
- ⊗ LIGHT POLE
- ✚ GROUND OR OTHER SPOT SHOT
- ♿ HANDICAPPED PARKING
- ⊙ ELECTRIC MANHOLE
- ⊙ ELECTRIC PEDESTAL
- ⊙ ELECTRIC METER
- ⊙ TELEPHONE MANHOLE
- ⊙ TELEPHONE PEDESTAL
- ⊙ MARKED FIBER OPTIC
- ⊙ GAS VALVE
- ⊙ GAS METER
- ⊙ STORM MANHOLE
- ⊙ ROUND INLET
- ⊙ CATCH BASIN
- ⊙ STORM SEWER END SECTION
- ⊙ SANITARY MANHOLE
- ⊙ SANITARY CLEANOUT OR SEPTIC VENT
- ⊙ SANITARY INTERCEPTOR MANHOLE
- ⊙ MISCELLANEOUS MANHOLE
- ⊙ WATER VALVE
- ⊙ HYDRANT
- ⊙ WATER SERVICE CURB STOP
- ⊙ WATER MANHOLE
- ⊙ WELL
- ⊙ WATER SURFACE
- ⊙ WETLANDS FLAG
- ⊙ MARSH
- ★ CONIFEROUS TREE
- DECIDUOUS TREE
- SHRUB
- — — — — EDGE OF TREES
- S — — — — — SANITARY SEWER
- STO — — — — — STORM SEWER
- W — — — — — WATERMAIN
- G — — — — — MARKED GAS MAIN
- E — — — — — MARKED ELECTRIC
- OHW — — — — — OVERHEAD WIRES
- B — — — — — BUREAU ELEC. SERV.
- T — — — — — MARKED TELEPHONE
- TV — — — — — MARKED CABLE TV LINE
- FO — — — — — MARKED FIBER OPTIC
- FM — — — — — FORCE MAIN

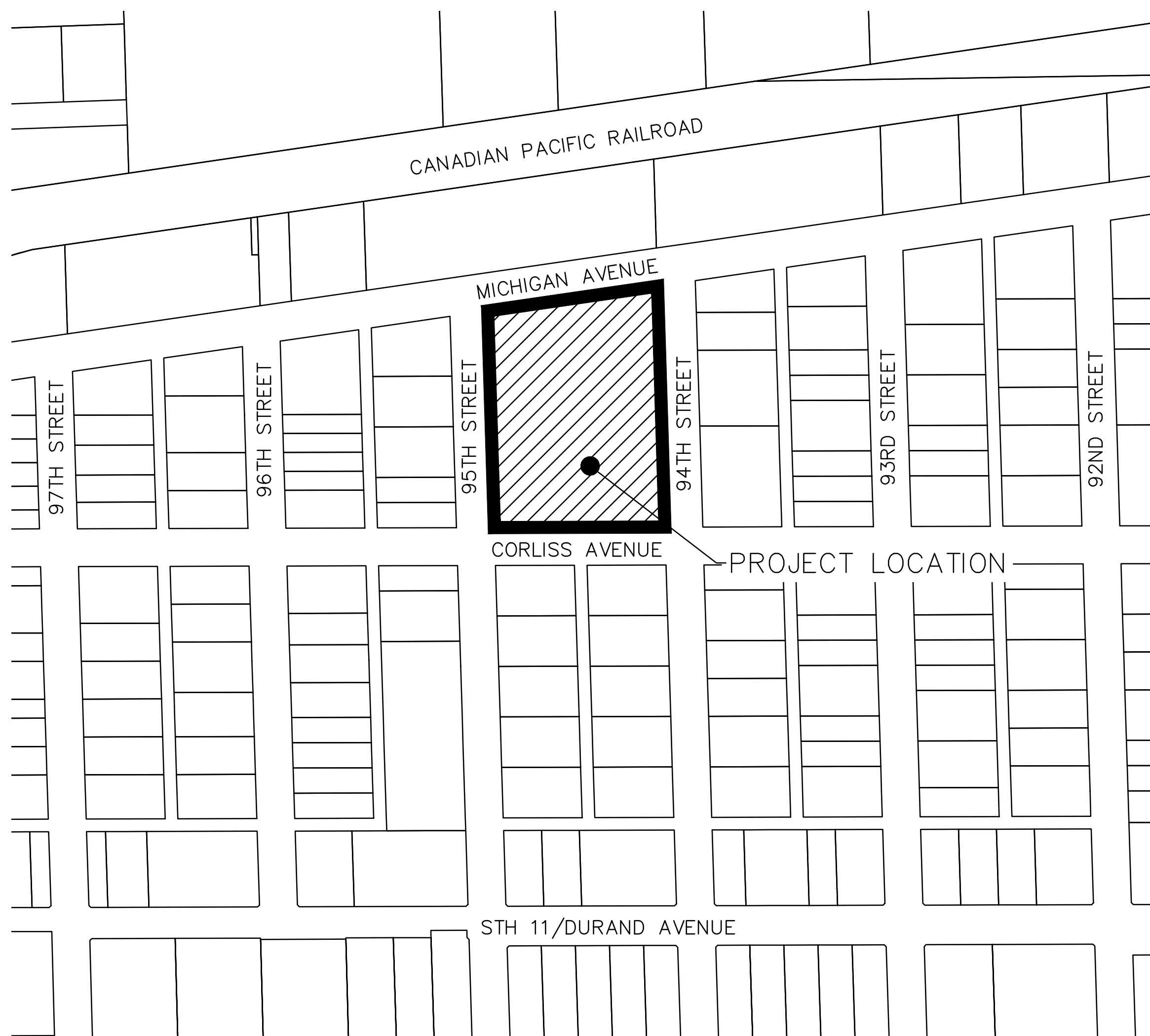
VILLAGE OF STURTEVANT RACINE COUNTY, WISCONSIN

2023 NORTH PARK IMPROVEMENTS



LOCATION MAP

1" = 150'



PLAN INDEX SHEET NO.

DESCRIPTION

01	COVER SHEET
02	GENERAL NOTES
03	REMOVAL PLAN
04	SITE PLAN
05 - 12	GRADING PLAN
13	LANDSCAPE PLAN
14	LANDSCAPE NOTES AND DETAILS
15	DETAILS

UTILITY CONTACTS:

WE ENERGIES— ELECTRIC
 JASON CHAPIN
 262-884-6706
 414-587-0655

RACINE WATER UTILITY
 MIKE GITTER
 DIRECTOR
 262-636-9430
 MIKE.GITTER@CITYOFRACINE.ORG

CHAD REGALIA, P.E.
 CHIEF ENGINEER
 262-636-9539
 CHAD.REGALIA@CITYOFRACINE.ORG

VILLAGE OF STURTEVANT
 JACK FEINER
 PUBLIC WORKS MANAGER
 262-886-7202

FIELD DATE

MAY 22, 2023

HORIZONTAL DATUM

Wisconsin State Plane Coordinate System, South Zone (NAD83/2011).

REFERENCE POINTS

- CP2
HUB, WEST SIDE OF 95TH ST.
- CP3
CHISELED "T" IN CURB, EAST SIDE OF 94TH ST.
- CP101
CHISELED "T" IN CURB, NORTH SIDE OF MICHIGAN AVE.
- CP100
CHISELED "T" IN CURB, WEST SIDE OF 94TH ST. AT CORLISS AVE.

VERTICAL DATUM

NAVD88

STARTING BENCHMARK

NONE
 Set CP 101 with GPS. Ran level loop through site benchmarks holding elevation of CP101.

SITE BENCHMARKS

PT#1000
 NW FLANGE BOLT ON HYDRANT
 WEST SIDE OF 94TH ST. AT CORLISS AVE.
 ELEVATION = 720.85

PT#1001

NW FLANGE BOLT ON HYDRANT
 NORTH SIDE OF MICHIGAN AVE. AT 95TH ST.
 ELEVATION = 718.04

DIGGERS HOTLINE

Locate Ticket #: 2023-19-17006
 Prints Ticket #: 2023-19-17009

Disclaimer:

The above vertical and horizontal reference points were measured on the field date listed hereon for the purpose of locating visible improvements and elevations illustrated on the design survey. The reference points are not intended for construction purposes nor is the perpetuation and/or protection of the reference points ensured. All reference points must be field verified prior to use in construction and/or layout staking.

DESCRIPTION

DATE

16745 W. Bluemound Road
 Brookfield, WI 53005-5938
 (262) 781-1000
 rasmith.com



Brookfield, WI | Milwaukee, WI | Appleton, WI | Madison, WI
 Cedarburg, WI | Naperville, IL | Irvine, CA

**VILLAGE OF STURTEVANT
 RACINE COUNTY, WI**

**2023 NORTH PARK IMPROVEMENTS
 COVER SHEET**



© COPYRIGHT 2023
 R.A. Smith, Inc.

DATE: 10/23/2023

SCALE: 1"=150'

JOB NO. 1220400

PROJECT MANAGER:
 JASON M. FEUCHT, P.E.

DESIGNED BY: AEL

CHECKED BY: JMF

SHEET NUMBER

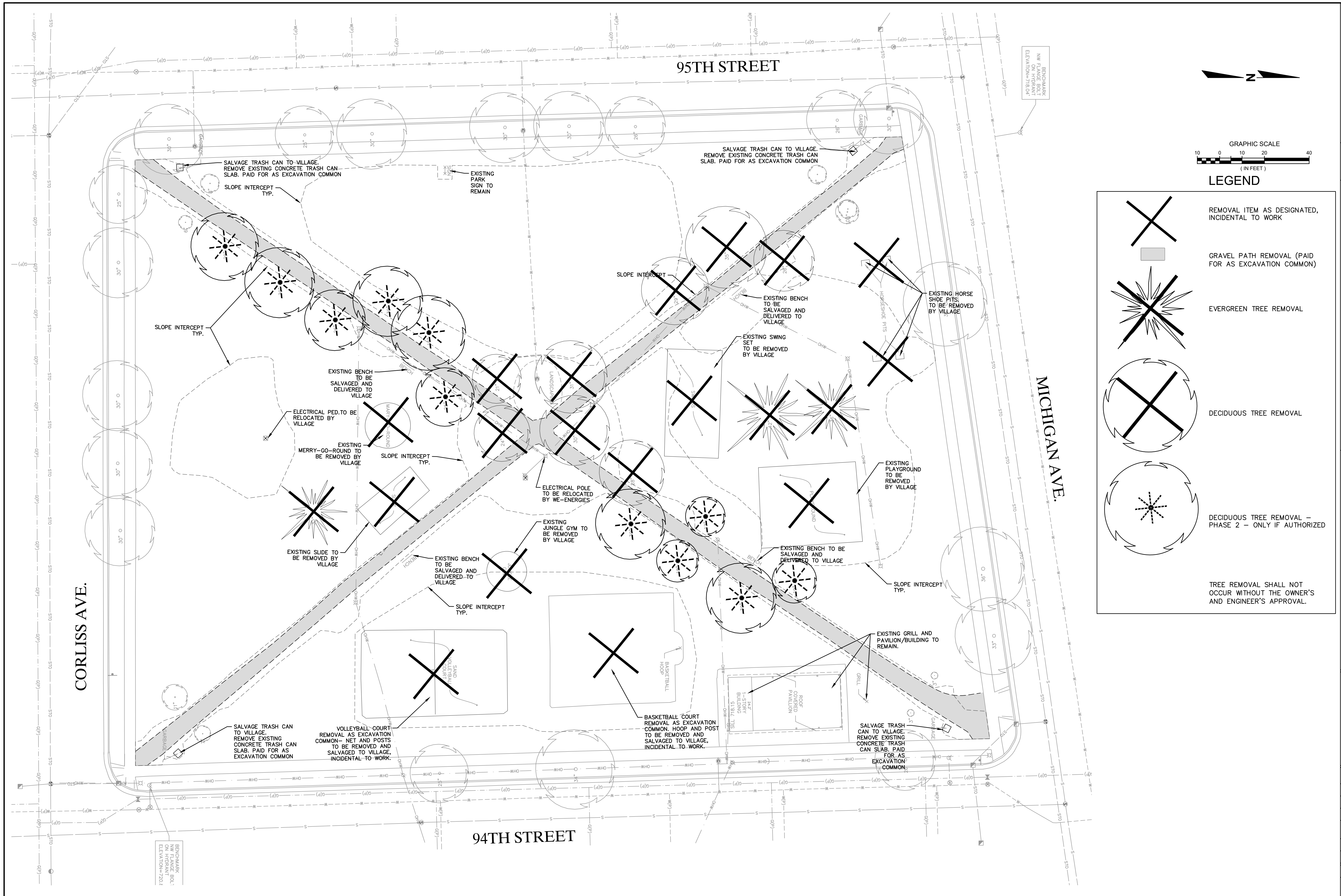
01



**Know what's below.
 Call before you dig.**

OWNER:
 VILLAGE OF STURTEVANT
 2801 89TH STREET
 STURTEVANT, WI 53177

R.A. SMITH, INC. ASSUMES NO RESPONSIBILITY FOR DAMAGES, LIABILITY OR COSTS RESULTING FROM CHANGES OR ALTERATIONS MADE TO THIS PLAN WITHOUT THE EXPRESSED WRITTEN CONSENT OF R.A. SMITH, INC.
ALL COPYRIGHTS TO THESE DRAWINGS ARE RESERVED. THEY MAY NOT BE COPIED, CHANGED, OR ASSIGNED TO ANY THIRD PARTY IN ANY MANNER WITHOUT OBTAINING THE EXPRESSED WRITTEN PERMISSION OF R.A. SMITH, INC.



DATE	DESCRIPTION

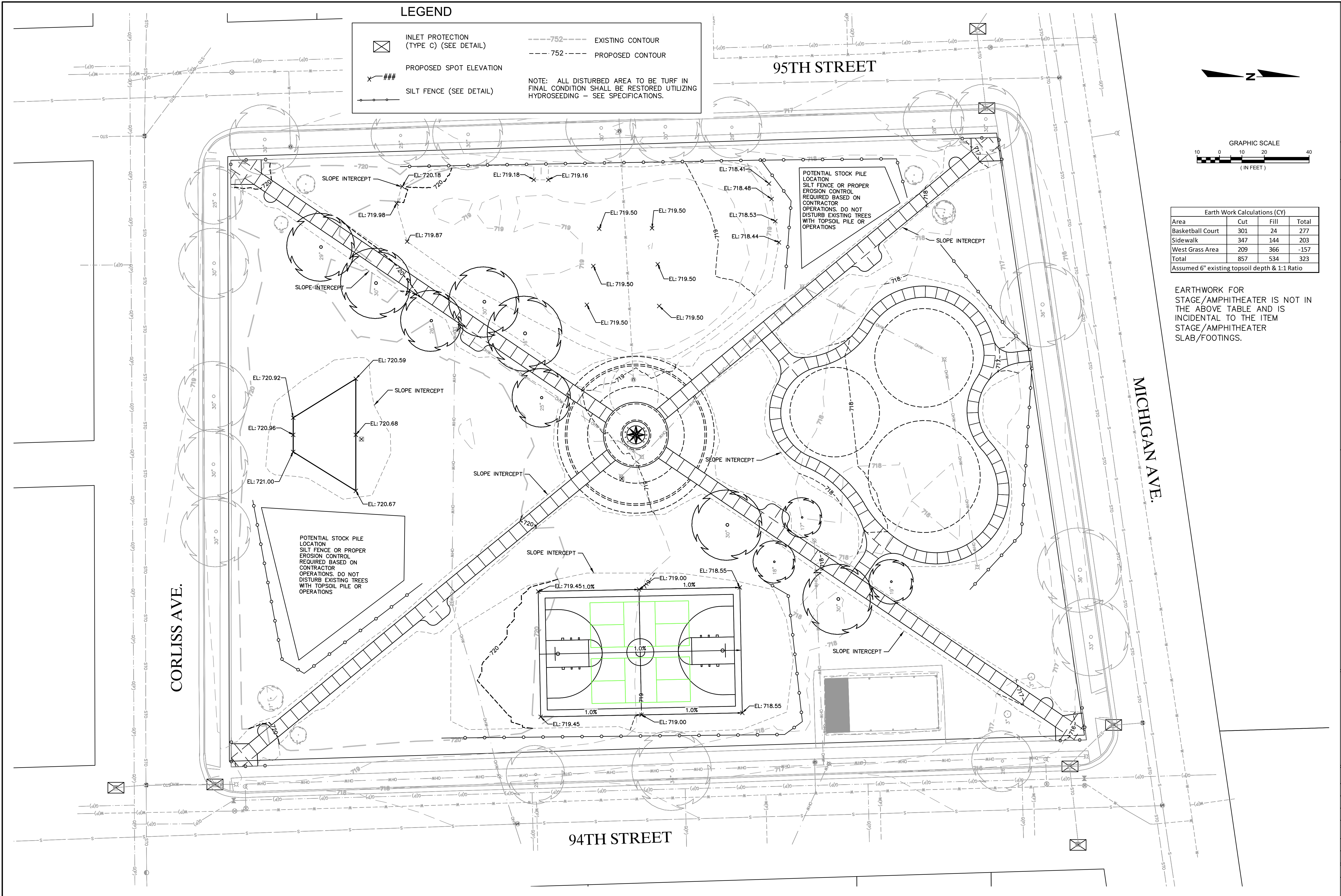
16745 W. Bluemound Road
Brookfield, WI 53005-5938
(262) 781-1000
rasmith.com

raSmith
CREATIVITY BEYOND ENGINEERING

Brookfield, WI | Milwaukee, WI | Appleton, WI | Madison, WI
Cedarburg, WI | Naperville, IL | Irvine, CA

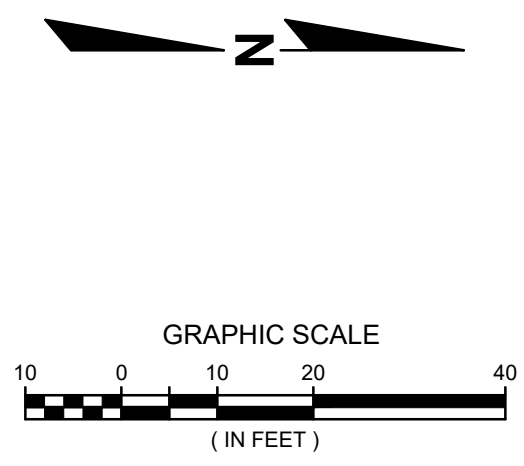
**VILLAGE OF STURTEVANT
RACINE COUNTY, WI
2023 NORTH PARK IMPROVEMENTS
REMOVAL PLAN**

© COPYRIGHT 2023 R.A. Smith, Inc.
DATE: 10/23/2023
SCALE: 1" = 20'
JOB NO. 1220400
PROJECT MANAGER: JASON M. FEUCHT, P.E.
DESIGNED BY: RJW
CHECKED BY: JMF
SHEET NUMBER 03



LEGEND

	INLET PROTECTION (TYPE C) (SEE DETAIL)		EXISTING CONTOUR
	PROPOSED SPOT ELEVATION		PROPOSED CONTOUR
	SILT FENCE (SEE DETAIL)	NOTE: ALL DISTURBED AREA TO BE TURF IN FINAL CONDITION SHALL BE RESTORED UTILIZING HYDROSEEDING - SEE SPECIFICATIONS.	



Earth Work Calculations (CY)

Area	Cut	Fill	Total
Basketball Court	301	24	277
Sidewalk	347	144	203
West Grass Area	209	366	-157
Total	857	534	323

Assumed 6" existing topsoil depth & 1:1 Ratio

EARTHWORK FOR STAGE/AMPHITHEATER IS NOT IN THE ABOVE TABLE AND IS INCIDENTAL TO THE ITEM STAGE/AMPHITHEATER SLAB/FOOTINGS.

DATE	DESCRIPTION

16745 W. Bluemound Road
Brookfield, WI 53005-5938
(262) 781-1000
rasmith.com

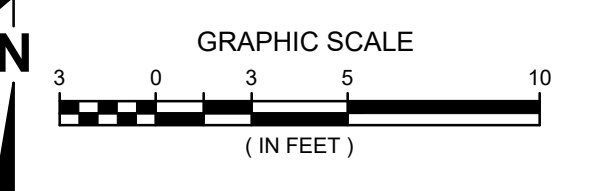
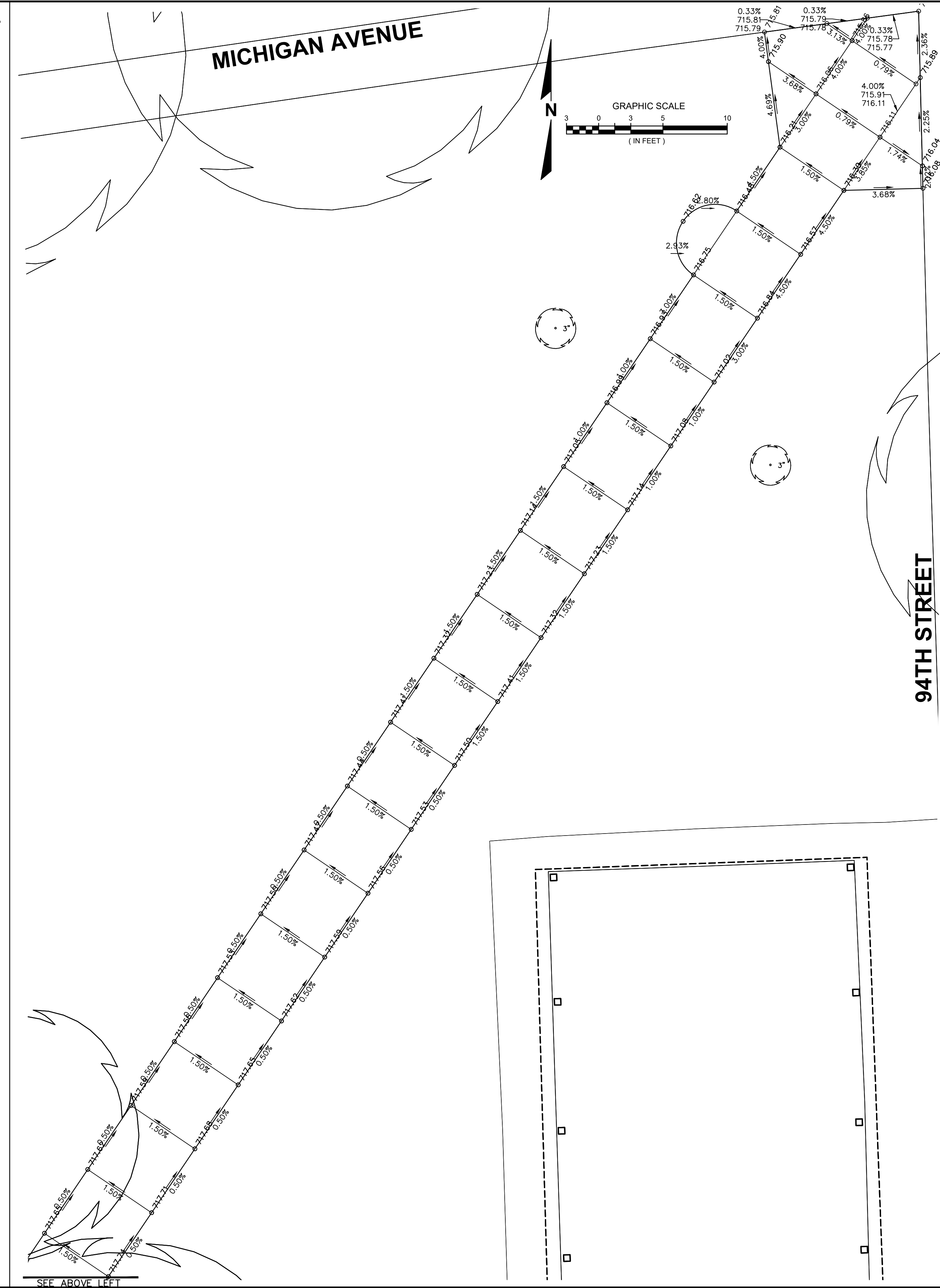
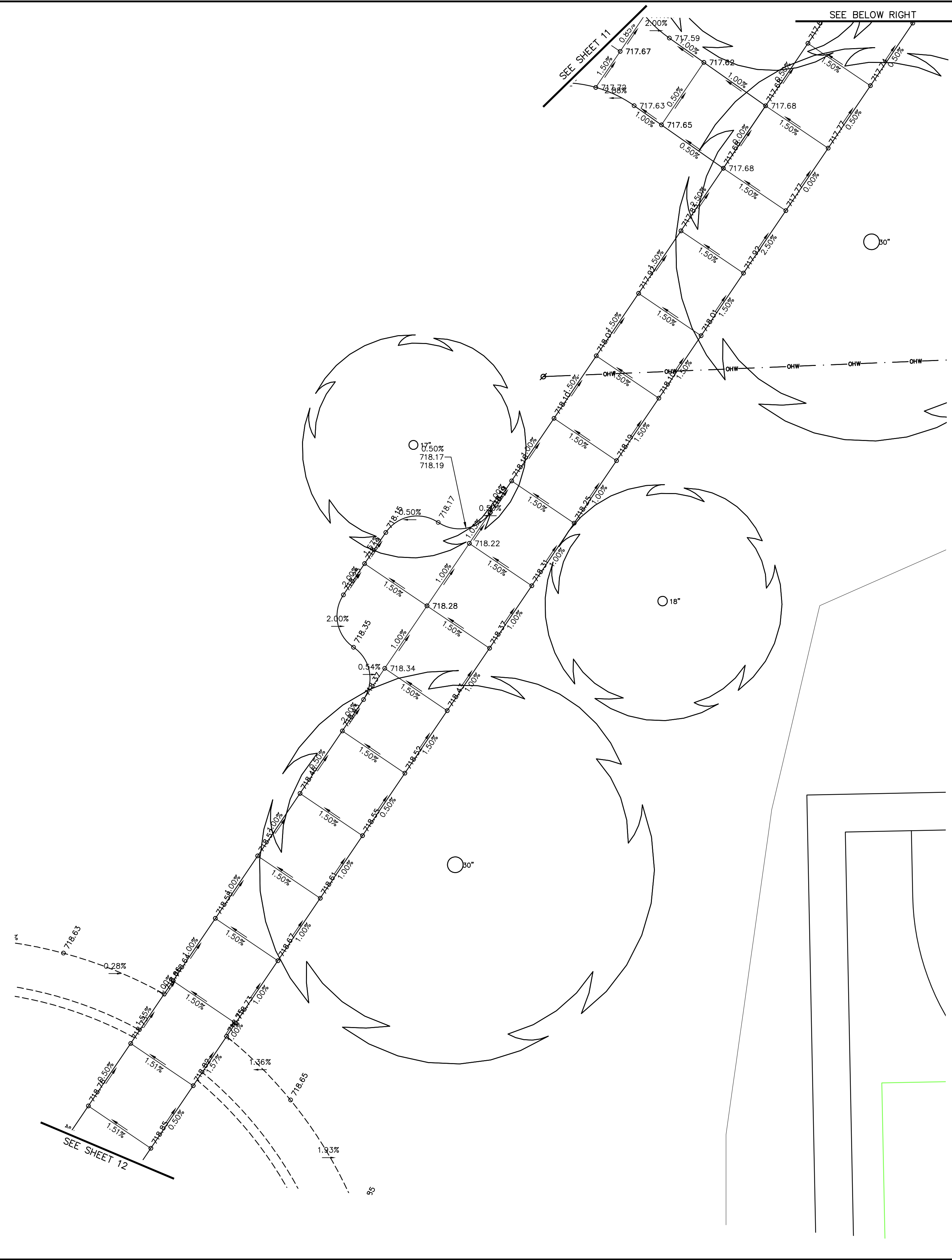
raSmith
CREATIVITY BEYOND ENGINEERING

Brookfield, WI | Milwaukee, WI | Appleton, WI | Madison, WI
Cedarburg, WI | Naperville, IL | Irvine, CA

**VILLAGE OF STURTEVANT
RACINE COUNTY, WI
2023 NORTH PARK IMPROVEMENTS
GRADING PLAN**

© COPYRIGHT 2023
R.A. Smith, Inc.
DATE: 10/23/2023
SCALE: 1" = 20'
JOB NO. 1220400
PROJECT MANAGER:
JASON M. FEUCHT, P.E.
DESIGNED BY: RJW
CHECKED BY: JMF

SHEET NUMBER
05



DESCRIPTION	
DATE	
<p>16745 W. Bluemound Road Brookfield, WI 53005-5938 (262) 781-1000 rasmith.com</p> <p>rasmith CREATIVITY BEYOND ENGINEERING</p> <p>Brookfield, WI Milwaukee, WI Appleton, WI Madison, WI Cedarburg, WI Naperville, IL Irvine, CA</p>	
<p>VILLAGE OF STURTEVANT RACINE COUNTY, WI</p> <p>2023 NORTH PARK IMPROVEMENTS GRADING NORTHEAST</p>	
<p>© COPYRIGHT 2023 R.A. Smith, Inc. DATE: 10/23/2023 SCALE: 1" = 5' JOB NO. 1220400 PROJECT MANAGER: JASON M. FEUCHT, P.E. DESIGNED BY: AEL CHECKED BY: JMF</p>	
<p>SHEET NUMBER 08</p>	

